

# 718 Upgrating Guide

## 一:Upgrating tools connecting .

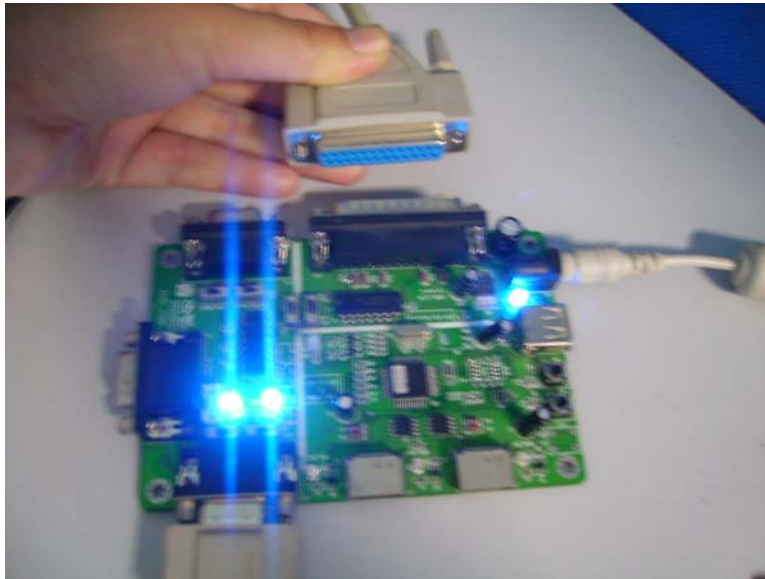
1.Pls connect the following combining port wire to the back port behind the computer.



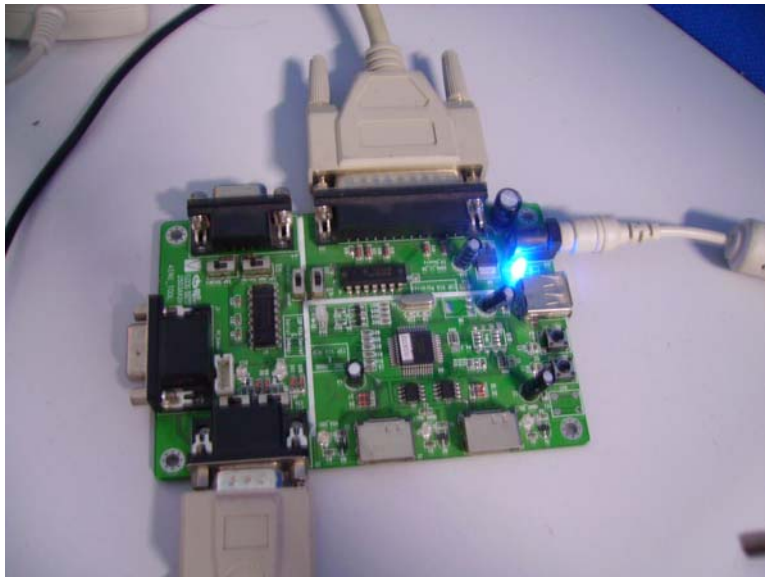
2.To see the following pic of the computer port,



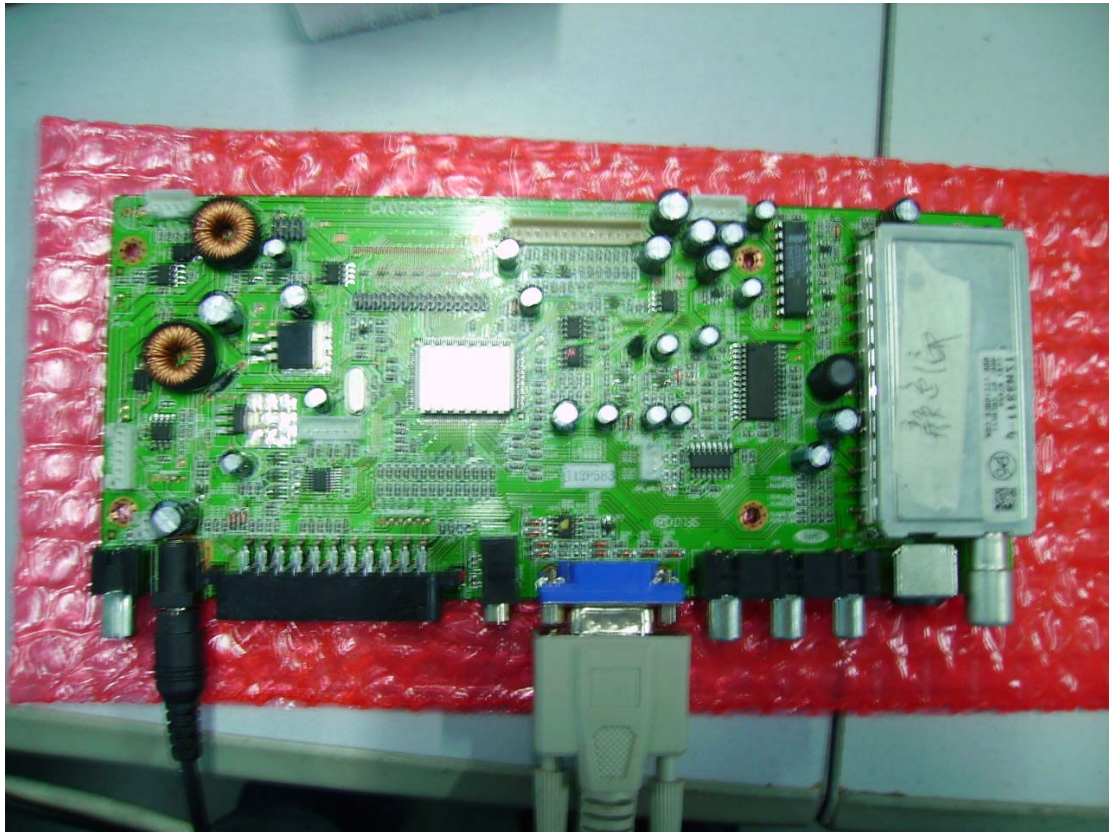
2.Pls see the following pic of connecting method of upgrating board, and the other end of combining port wire needs to be connected to upgrating board.



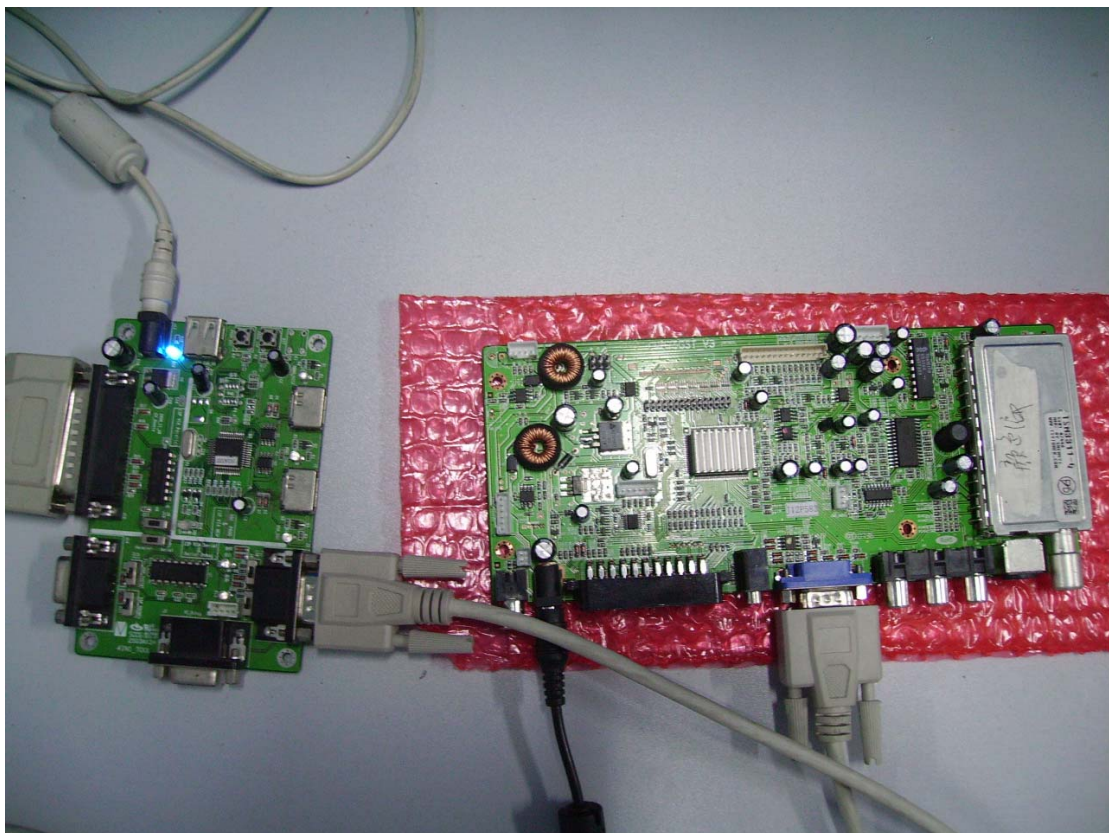
The connecting picture



3.The main pcb connecting method :



4.As following pic: one end of VGA wire should connect to upgrating board,and the other end need to link main PCB.



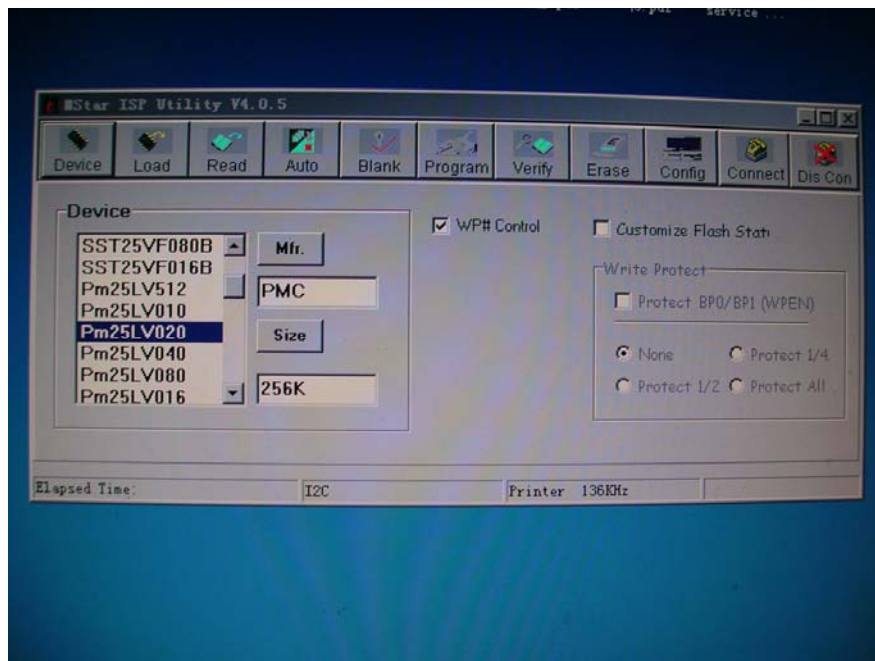
二:

1.Pls open ISP\_Tool V4.0.5.exe file.

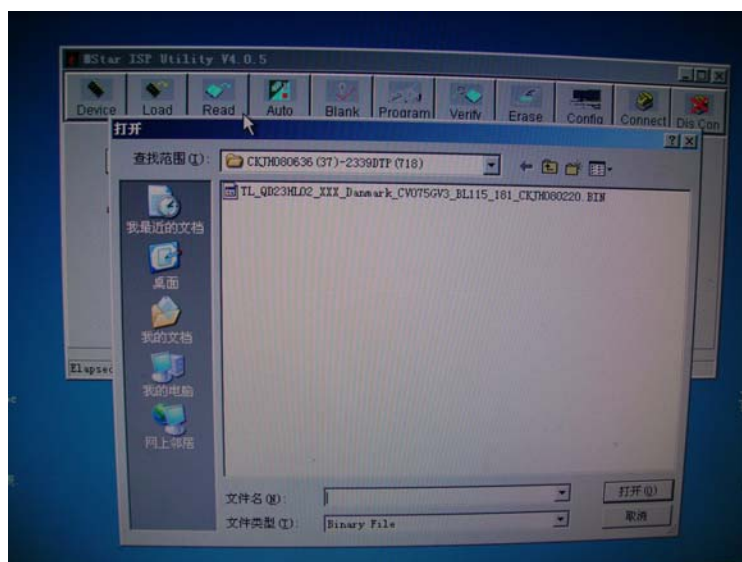
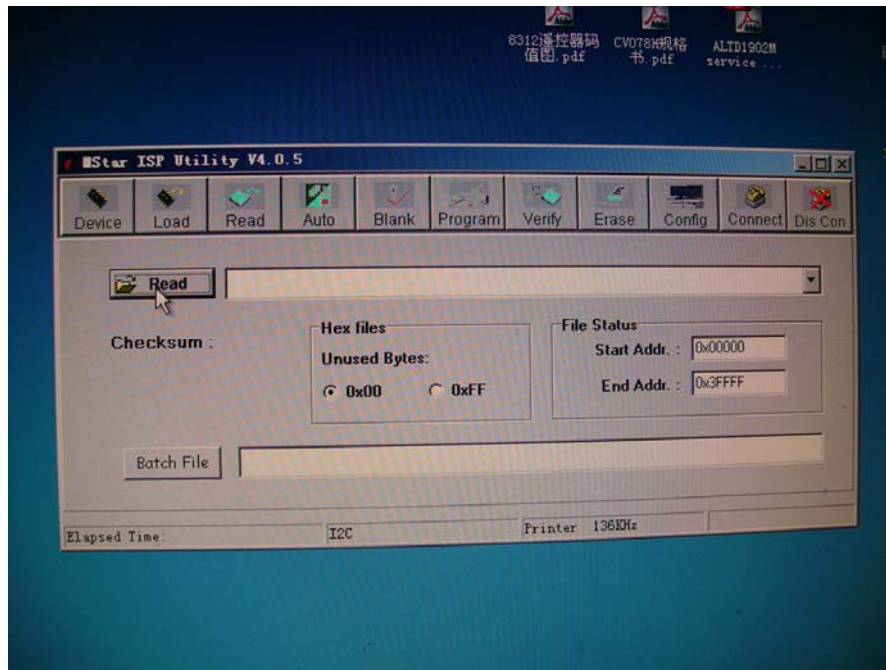




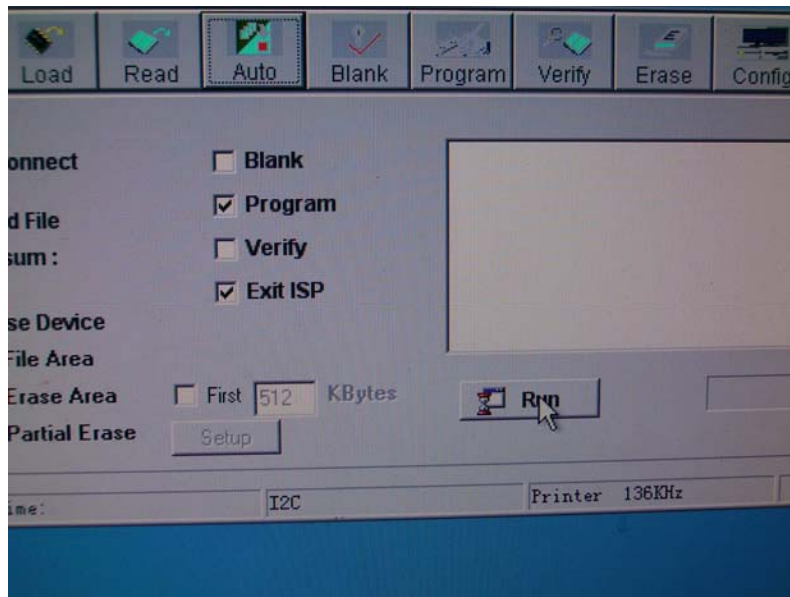
1. ,Clip the first option at the left of pic, and choose "Pm25lv020" at the left line,next line will show the letter "PMC""256K",that means choosing correctly.



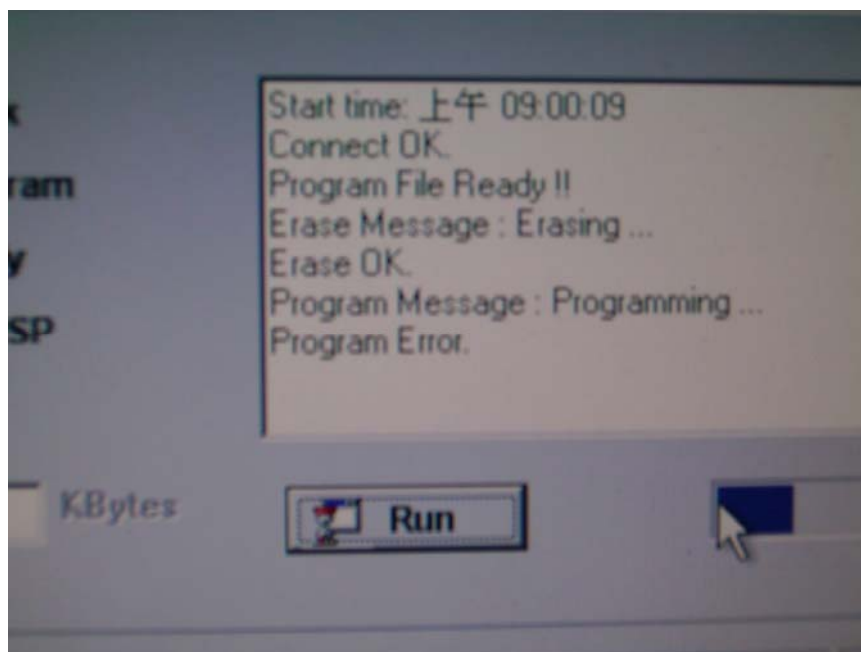
2. Clip the third option "Read" at the left pic,and to choose the upgrating file in the catalogue



3. Click the fourth option "Auto", to cancel those two options of "Blank" and "Verify", just "Program" and "Exit ISP" two options have marks. At last, please click "Run"



As the following pic ,if upgrading is not successful, it will show "Program Error". Pls try many times to click "Run" until upgrading successfully.



If successfully upgraded, the signal is "Program OK",pls see the following pic:

am  
SP

Connect OK.  
Program File Ready !!  
Erase Message : Erasing ...  
Erase OK.  
Program Message : Programming ...  
Program OK.  
End time: 上午 09:04:58

KBytes

